



PO Box 1903,
Fairhope, Alabama 36533

Impact 100 Baldwin County Membership Matters

August 2016

Calendar

Impact Events

August 24 **Just for Fun Social**
12:00 noon
Ginny Lane
The Wharf - Suite 106, Orange Beach

September 28 **Fall Social**
5:00 p.m.
Wintzell's
805 South Mobile, Fairhope

November 1 **Annual Meeting**
4:30 p.m.
Daphne Civic Center
2603 U.S. Highway 98, Daphne

Mission Statement

Impact 100 Baldwin County is a community of women seeking to transform lives in Baldwin County by awarding high impact grants to nonprofits in the areas of Arts and Culture • Education • Environment, Preservation and Recreation • Family • Health and Wellness.



Be sure to check out and "Like" our Facebook page, Impact 100 Baldwin County.

From our President

Many Impact 100 members may not realize how much work takes place over the summer months in pursuit of our mission to transform lives in Baldwin County! The Board of Directors and the Membership Committee have been busy looking ahead and planning for our 2017 membership year. Further, the five Focus Groups have spent the summer evaluating grant applications and selecting the finalists from which we will all choose our grant winners on November 1st!

The role of a Focus Group member is extremely important and requires a commitment to attend the meetings, read the applications, make site visits, and participate in deliberations over the selection of the finalists. I want to thank every person who has served for giving time and attention to this crucial aspect of fulfilling our mission. All Impact members will receive summaries of the grant finalists' proposals in the mail in about 6 weeks! We eagerly anticipate seeing results of the efforts of the Focus Groups!

~ Miranda Schrubbe

MISSION ~~IM~~POSSIBLE!

Focus Groups wrapping up grant reviews

This year, over 60 women served on our five Focus Groups. Their efforts literally represent the Impact Mission in action - helping transform lives by making high-impact grants in each of our five interest areas. It's a rigorous process and Focus Group members take their responsibility very seriously.

The grant review process began this spring when area nonprofits submitted proposals for projects they would love to implement but cannot fund. They hope a grant from Impact will help turn their dream into a reality and allow their project to move from "Mission Impossible" to "Mission Possible!"

During the Focus Group review process, members discuss the merits of each proposal and perform site visits. After the site visits have been concluded, members then discuss what they learned on those visits, and decide which proposals should be brought forward to the Membership for consideration at our Annual Meeting on November 1.

(cont'd on page 2)

IN THIS ISSUE

PAGE

<i>President's Letter: Focus Groups</i>	1
<i>Focus Groups Wrapping Up</i>	1
<i>JUST FOR FUN</i>	2
<i>"In The News"</i>	2
<i>Impact 100 Grants through the years</i>	3

MISSION POSSIBLE!

Focus Groups wrap up

(cont'd from page 1)

Grant review is a demanding and thorough process. But it's also a rich and rewarding experience. Not only do Focus Group members become better educated about community issues and the organizations addressing those issues, but it's a great way to get to know other Impact members even better.

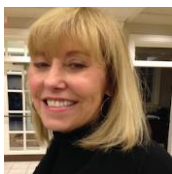
Two first-year Impact members, Anne Irving and Loula Wilson, are happy to attest to that. Both women are relatively new to the community - Anne's been in Fairhope for two years, after retiring from Wells Fargo. Loula moved to Fairhope three years ago after retiring from a career with Montessori. Serving on the Education Focus Group helped them become more familiar with their new community and provided an opportunity to make new friends.

Loula volunteered to serve on the Education Focus Group because of her professional and personal interests and because she thought the Focus Group experience would be the best way to learn what Impact is all about. "I was really impressed with how organized and beautifully run it was. I wasn't sure what to expect, but I loved it... It was a very comfortable experience."



Loula Wilson

And, she says, she'll do it again next year. "It's been a great way to get to know about the nonprofit organizations and all the wonderful people who work in them." She particularly enjoyed the site visits and seeing first-hand just how different each organization is. "Some operate with very few resources, while others have many more resources and are much more high-tech."



Anne Irving

Anne's background at Wells Fargo was a natural fit for reviewing grant applicants' financial statements. Serving on the Education Focus Group also helped her accomplish her goal of becoming more familiar with the community. "I wanted to learn more about the area I'd moved to and, being newly retired, I was also

looking to involve myself with like-minded professional women."

In addition to everything she learned about the community, one of the best parts of serving on a focus group was "meeting all the people - on my focus group, as well as all the people who work at the nonprofits."

She, too, plans to serve again next year. Her advice to other members? Serve on a focus group. "You'll be impressed with how much effort is put into the review process - all the site visits, the reviews, the meetings, and reports... It's a great way to get to know your community, and your other Impact members, better."

JUST FOR FUN - Always Fun!

Join us for the next two Just For Fun Socials. No rules. No agenda. Just fun. So, grab a friend and join us!

August 24 - 12:00 - Lunch at Ginny Lane at the Wharf in Orange Beach. Come enjoy a day of shopping and lunch at the Wharf and meet our great Impact members from South Baldwin. Guests always welcome.

September 28 - 5:00 - Fall Social with husbands or guests. Hosted by Buffy Donlon, this popular annual event will be at Wintzell's in Fairhope. Cash bar available, with light hors d'oeuvres provided. Prospects and guests are welcome.

For more information, contact Pud Nelson or Jerry Ann McCaron.

In the News!

Impact has so many talented members, we want to acknowledge their achievements. This month, we offer congratulations to:



- **B'Beth Weldon** (Fairhope), Impact member and Baldwin County artist, who was recently recognized by USA Mitchell Cancer Institute for the donation of her painting, "Fall for the Delta." The 3-panel painting will be installed at MCI-Fairhope when the new treatment office is completed in 2017.

If you or an IMPACT member you know has been in the news recently, received a promotion or retired, etc., let us know. Email us at Impact100BaldwinCountyNews@gmail.com so we can share the news! Include the member's name, city and the accomplishment(s) that should be celebrated and we'll include it in the next newsletter. If you have a related news clip or link, feel free to send that along, too.

amazon smile
You shop. Amazon gives.



When you're shopping on Amazon, be sure to log onto smile.amazon.com and designate **Impact 100 Baldwin County** as your recipient charity. Amazon will then send us a donation of .5% of the total amount of your purchases! It's a very easy way to contribute to our administrative fund and is absolutely free to you! It's a win-win (not to mention a great excuse to shop)!

IMPACT grants make an impact – all over Baldwin County!

As our Focus Groups complete their work and finalize their 2016 grant recommendations, we thought you might like to see where we've awarded our grants over the past eight years...

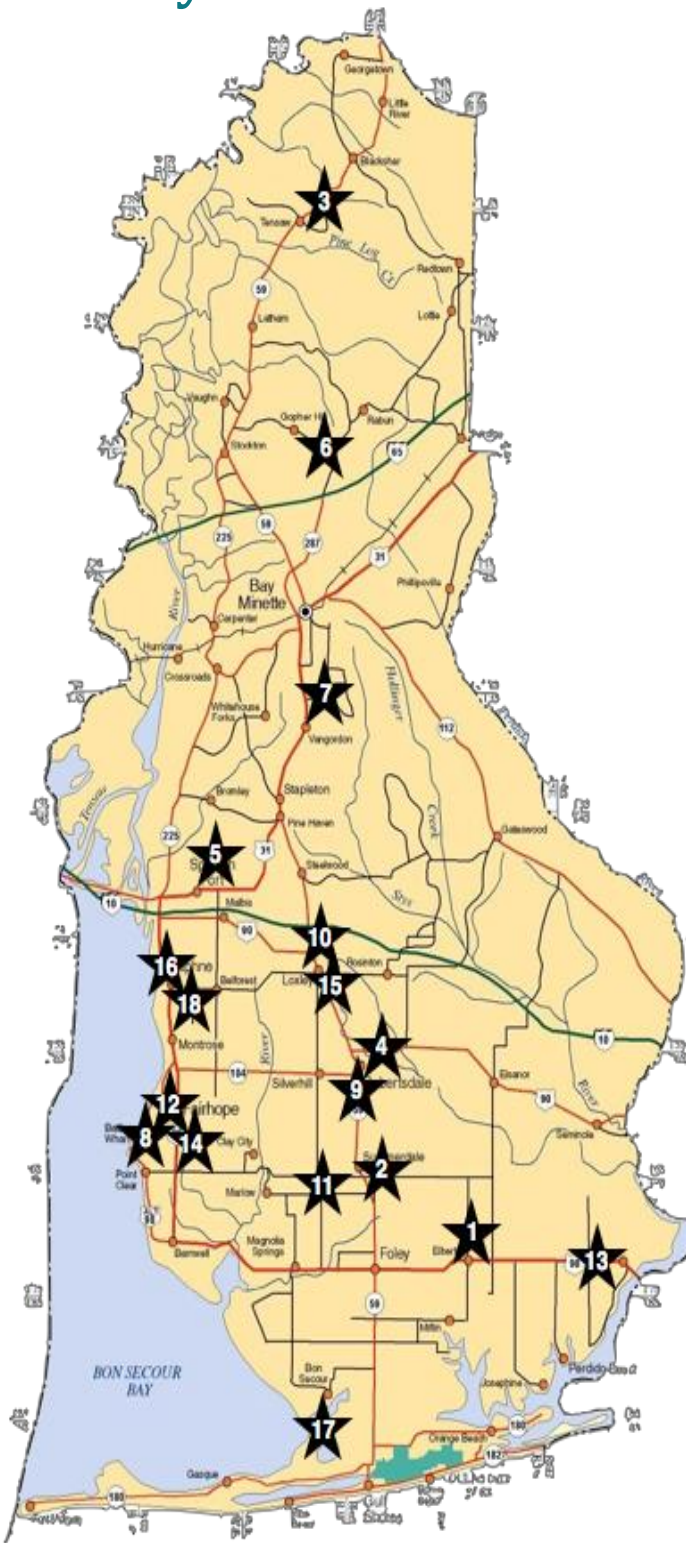
Since 2008, Impact 100's grants have been hard at work all over Baldwin County. In fact, it would be difficult to find an area that has not benefitted, in one way or the other, by an Impact grant. In November, we will award another four grants, bringing our grant total to over \$2.1 million! Now, THAT's making an impact!

GRANTEES, 2008-2015

- 1 - Mary's Shelter (2008)
- 2 - Care House (2009)
- 3 - Outward Bound (2010, Countywide)
- 4 - Family Promise (2011)
- 5 - Prodissee Pantry (2011)
- 6 - Ecumenical Ministries (2012, Countywide)
- 7 - Big Brothers Big Sisters (2013, Countywide)
- 8 - Faulkner Foundation (2013)
- 9 - The Lighthouse (2013)
- 10 - Autism Avenue (2014, Countywide)
- 11 - Baldwin Co. Youth Orchestra (2014, Countywide)
- 12 - Fairhope-Pt Clear Rotary Youth Club (2014)
- 13 - Lower AL Search & Rescue (2014)
- 14 - Shepherd's Place (2014)
- 15 - ARC Baldwin County (2015)
- 16 - AUC Resource Center (2015)
- 17 - Baldwin Co Foster & Adoptive Parent Assn (2015, Countywide)
- 18 - Daphne Search and Rescue (2015)

But don't forget that our ability to make grants is a direct result of our successful membership campaigns – and a direct result of YOUR membership contribution. So, thank you for the difference you are making, the lives you are impacting, all over the county.

As we gear up for our membership drive after the Annual Meeting, let this map inspire you to recruit a friend, co-worker, neighbor, family member (or a complete stranger!) to join us and help make an even bigger impact ... all over Baldwin County!



Women Together ... Community Impact

IMPACT 100 Baldwin County ♦ PO Drawer 1903 ♦ Fairhope, AL 36533

Email: Impact100BaldwinCounty@gmail.com ♦ Visit our website at www.Impact100BaldwinCounty.org

